

The Gyproc RhinoLite Range of Plasters

Gyproc RhinoLite MultiPurpose plaster

RhinoLite Multipurpose plaster is a multipurpose finishing plaster applied with a one-coat application method using a steel trowel and a rubber float. A straight edge and/or darbies will be required when applying as a thick levelling plaster.

A lightweight basecoat and finishing plaster

RhinoLite is a lightweight retarded hemihydrate gypsum plaster, specially manufactured as a combined basecoat, finishing and multi-purpose plaster for internal application onto brickwork, concrete block, concrete and Gyproc RhinoBoard, and as a finishing plaster onto sand cement basecoats.



Gyproc RhinoLite Multipurpose plaster is suitable for providing:

- a highly polished smooth surface,
- a brush finish, or
- a textured finish,

and should be used neat, added to clean water only. Setting time is approximately 60 minutes.

As in good building practice, roof, windows and doors should be installed before plastering with Gyproc RhinoLite (to help prevent dry-outs and ensure consistent setting).

Gyproc RhinoLite should not be used in areas where walls are washed with hosepipes, in showers or in industrial type kitchens.

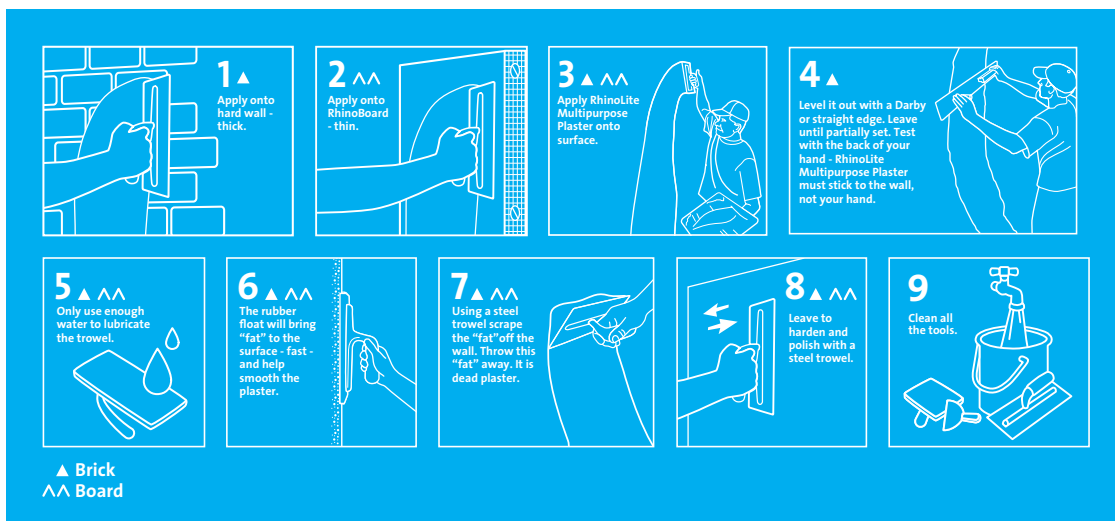
Mixing instructions

- 1** Use cold clean water only.
- 2** Do not add any foreign matter.
- 3** Soak for 10 minutes.
- 4** Mix slowly until there are no lumps.
• Do not over stir.
• Do not mix with your hands.
- 5** Clean tools and mixing container after each mix.
- 6** Do not mix more RhinoLite Multipurpose Plaster than you can use in 1 (one) hour.

*Note: Times are dependent on external conditions and tests have been done in controlled conditions.

Application instructions

1. Surfaces to be clean of dust and oil residue before application.
2. Don't apply when temperature is below freezing.
3. Application of epoxy paint is not recommended.
4. Please consult your paint vendor/manufacturer on the correct primer for application onto gypsum surfaces.
5. For detailed application refer to Gyproc Plaster Guide Booklet or contact the Customer Contact Centre 0860 27 28 29.
6. Store inside on a level surface, off the floor, in a dry place protected from the weather.
7. For interior use only.
8. Not for human consumption.



Note: Should not be sanded.

Covering capacity

The approximate coverage of a 10kg bag of Gyproc RhinoLite Multipurpose Plaster is:

- 6.25m² applied to a thickness of 3mm
- 2.88m² applied to a thickness of 5 - 6mm
- 1.12m² applied to a thickness of 12 - 15mm
- 0.75m² applied to a thickness of 15 - 20mm

The approximate coverage of a 40kg bag of Gyproc RhinoLite Multipurpose Plaster is:

- 25m² applied to a thickness of 3mm
- 11.5m² applied to a thickness of 5 - 6mm
- 4.5m² applied to a thickness of 12 - 15mm
- 3m² applied to a thickness of 15 - 20mm

These coverage rates are according to laboratory tests.

N.B. RhinoLite Multipurpose Plaster should not be applied less than 3mm thick.

Tools for application

Mixing bucket



Hawk



Steel trowel



Rubber float



Darby or straight-edge

