

## The Gyproc RhinoLite Range of Plasters

### Gyproc RhinoLite Natural Plus Multipurpose Plaster

RhinoLite Natural Plus Multipurpose is a multipurpose finishing plaster applied with a one-coat application method by using a steel trowel and a rubber float. A straight edge and/or darbies will be required when applying as a thick levelling plaster.

#### A lightweight basecoat and finishing plaster.

Gyproc RhinoLite is a lightweight retarded hemihydrate gypsum plaster, specially manufactured as a combined basecoat, finishing and multi-purpose plaster for interior application onto brickwork, concrete block, concrete and RhinoBoard, and as a finishing plaster onto sand cement basecoats.



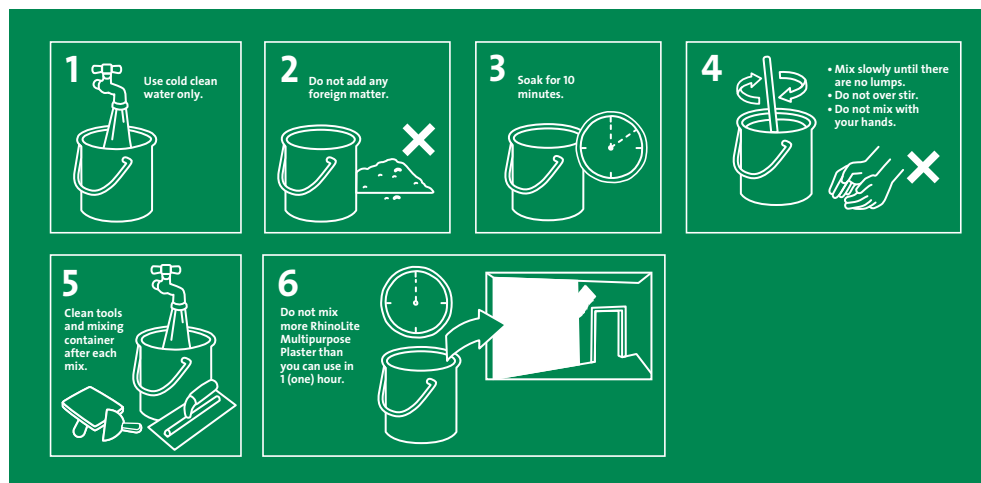
Gyproc RhinoLite Natural Plus Multipurpose Plaster is suitable for providing:

- a highly polished smooth surface,
- a brush finish, or
- a textured finish, and should be used neat, added to clean water only. The plaster has a setting time of approximately 60 minutes.

As in good building practice, roof, windows and doors should be installed before plastering with Gyproc RhinoLite (to help prevent dry-outs and ensure consistent setting).

Gyproc RhinoLite should not be used in areas where walls are washed with hosepipes, in showers or in industrial type kitchens.

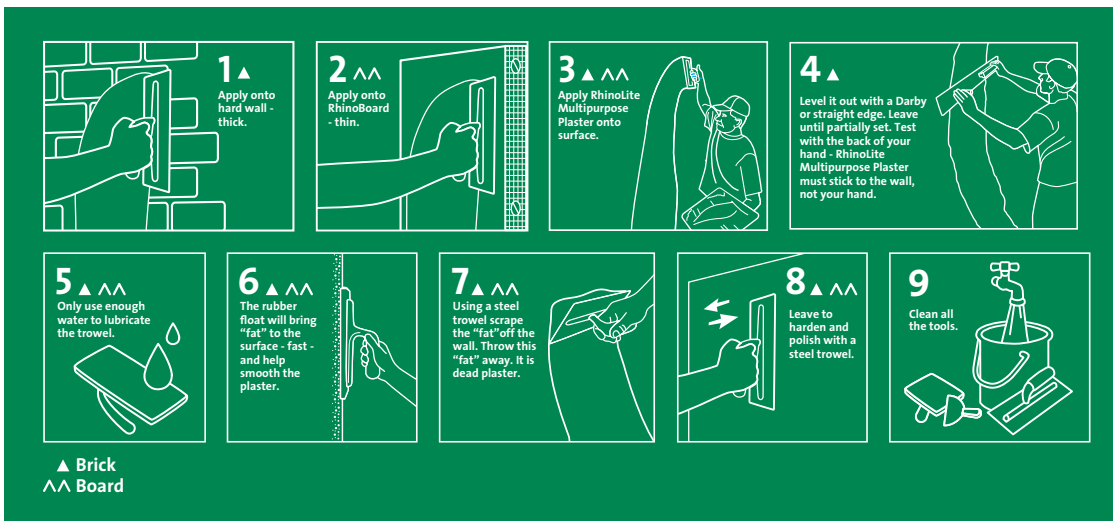
### Mixing instructions



**\*Note: Times are dependent on external conditions and tests have been done in controlled conditions.**

### Application instructions

1. Do not apply when temperature is below freezing.
2. Surfaces to be clean and dust free before application.
3. For internal use only.
4. Please consult your paint vendor/manufacturer on the correct primer for application onto gypsum surfaces.
5. Application of epoxy paint is not recommended.
6. Not for human consumption.
7. For detailed application refer to Gyproc Plaster Guide Booklet or contact the Customer Contact Centre 0860 27 28 29.
8. Store inside on a level surface, off the floor, in a dry place protected from the weather.



Note: Should not be sanded.

### Covering capacity

The approximate coverage of a 40kg bag of RhinoLite Multipurpose Plaster is:

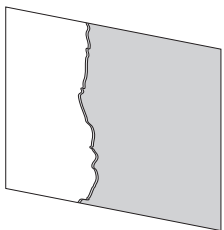
25m<sup>2</sup> applied to a thickness of 3mm

11.5m<sup>2</sup> applied to a thickness of 5 - 6mm

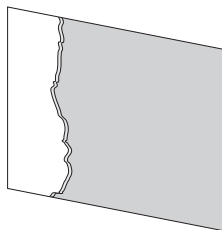
4.5m<sup>2</sup> applied to a thickness of 12 - 15mm

3m<sup>2</sup> applied to a thickness of 15 - 20mm

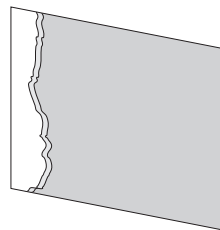
**N.B.** Gyproc RhinoLite Multipurpose Plaster should not be applied less than 3mm thick.



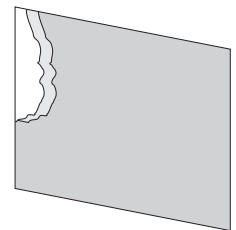
25m<sup>2</sup> at thickness of 3mm



11.5m<sup>2</sup> at thickness of 5-6mm



4.5m<sup>2</sup> at thickness of 12-15mm



3m<sup>2</sup> at thickness of 15-20mm

### Tools for application

Mixing bucket



Hawk



Steel trowel



Rubber float



Darby or straight-edge

